

# Prime Shop/Warehouse with Office

801 Ogden Ave • Offered at \$298,000



**Greg Follmer, Broker MN & WI**  
218-310-0013 • [gregfollmer@gmail.com](mailto:gregfollmer@gmail.com) • [www.GregFollmer.com](http://www.GregFollmer.com)  
All Information Herein Deemed Reliable but not Guaranteed

# Prime Shop/Warehouse with Office

801 Ogden Ave • Offered at \$298,000



**Prime Steel building conveniently located in Superior with easy access to major roadways. Shop/Warehouse with 2 drive in doors, mezzanine level, and office space. Shop space includes 2 jib cranes with 360 degree rotation and 1 and 2 ton capacity. 14,000 SF lot for ample parking. Excellent Opportunity—Quality Building!!**



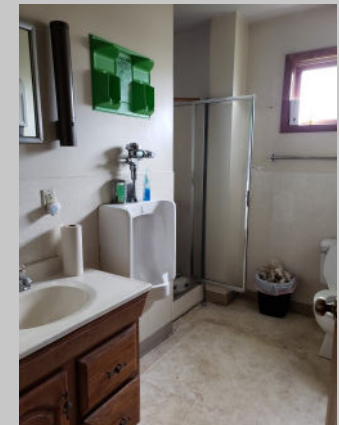
**Greg Follmer, Broker MN & WI**  
218-310-0013 • [gregfollmer@gmail.com](mailto:gregfollmer@gmail.com) • [www.GregFollmer.com](http://www.GregFollmer.com)  
All Information Herein Deemed Reliable but not Guaranteed

# Prime Shop/Warehouse with Office

801 Ogden Ave • Offered at \$298,000



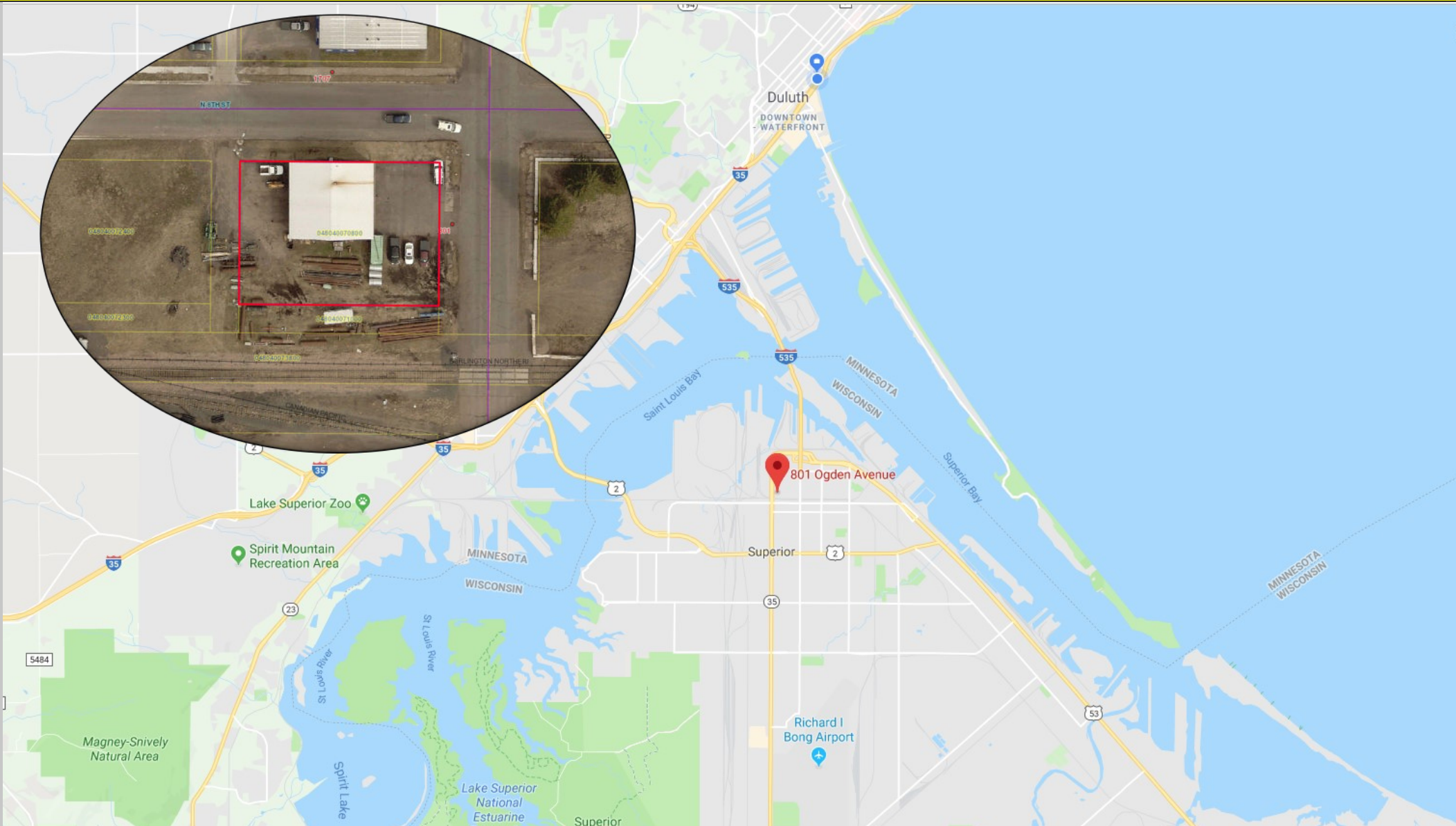
- 100x140 Lot Size
- 2018 Taxes \$3262.64
- Zoned G-2 Commercial
- #04-804-00708-00
- 2700 Square Feet Warehouse
- 500 Square Feet Mezzanine
- 400 AMP / 3 phase Electric
- Built in 1989



Greg Follmer, Broker MN & WI  
218-310-0013 • gregfollmer@gmail.com • www.GregFollmer.com  
All Information Herein Deemed Reliable but not Guaranteed

# Prime Shop/Warehouse with Office

801 Ogden Ave • Offered at \$298,000



**Greg Follmer, Broker MN & WI**  
218-310-0013 • [gregfollmer@gmail.com](mailto:gregfollmer@gmail.com) • [www.GregFollmer.com](http://www.GregFollmer.com)  
All Information Herein Deemed Reliable but not Guaranteed