

F FOR LEASE



1105 E Superior St • Duluth, MN
Up to 7,224 SF Office Building Available
Prime East End/Medical District Location

Greg Follmer • Broker MN WI • 218.310.0013 • GregFollmer@gmail.com

230 East Superior Street • Duluth, Minnesota 55802 • Licensed in Minnesota and Wisconsin

All Information Herein Deemed Reliable but not Guaranteed

F FOR LEASE

1105 E Superior St ▪ Duluth, MN Up to 7,224 SF Office Building Available Prime East End/Medical District Location

- 3,612 SF/Floor
- Elevator
- On-site Parking
- Zoned MU-I
- 7,224 SF total

Two Story Office building in prime East End/Medical District location. Ample on site parking, on bus line, and just blocks from the new Essential Vision Northland and St. Luke's Hospital System.

Competitive NNN Rate available.



Follmer for results.

Greg Follmer ▪ Broker MN WI ▪ 218.310.0013 ▪ GregFollmer@gmail.com

230 East Superior Street ▪ Duluth, Minnesota 55802 ▪ Licensed in Minnesota and Wisconsin



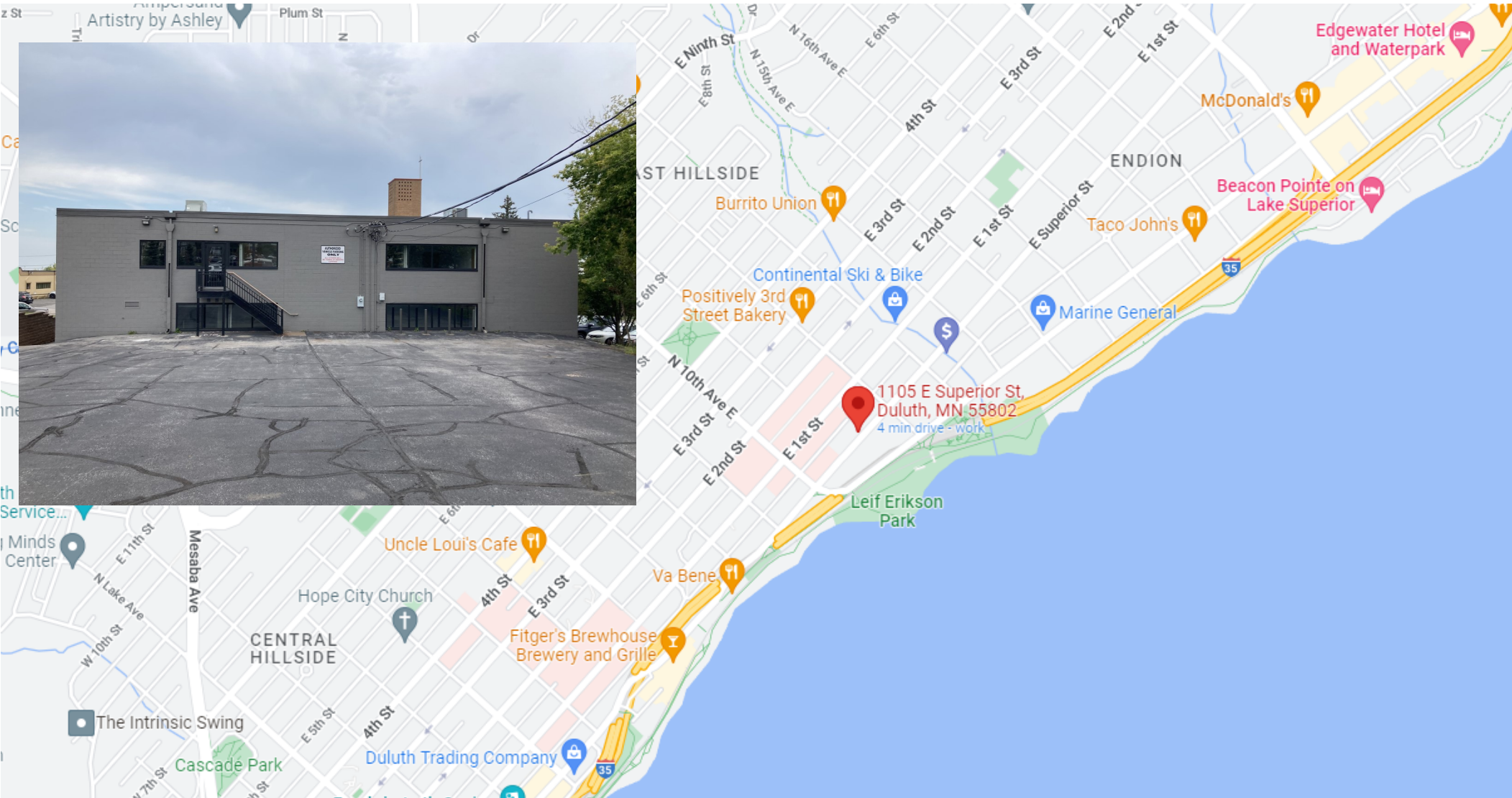
Greg Follmer ▪ Broker MN WI ▪ 218.310.0013 ▪ GregFollmer@gmail.com

230 East Superior Street ▪ Duluth, Minnesota 55802 ▪ Licensed in Minnesota and Wisconsin

All Information Herein Deemed Reliable but not Guaranteed

F FOR LEASE

1105 E Superior St ▪ Duluth, MN Up to 7,224 SF Office Building Available Prime East End/Medical District Location



Greg Follmer ▪ Broker MN WI ▪ 218.310.0013 ▪ GregFollmer@gmail.com

230 East Superior Street ▪ Duluth, Minnesota 55802 ▪ Licensed in Minnesota and Wisconsin

All Information Herein Deemed Reliable but not Guaranteed