

# OFFICE SUITES FOR LEASE

## 301 W Superior St, Duluth, MN 55802

### The Historic Board of Trade Building



# **Find your place at the Historic Board of Trade Building**

**Various spaces are available, including the historic Trading Floors**

**Built in 1895, the Board of Trade has been thoughtfully redeveloped into a 74,000 SF mixed-use building consisting of 84 (fully leased) residential units and 16,000 SF of commercial space.**

**Ideally located on West First Street, the Board of Trade is connected to the extensive Duluth skywalk, just blocks from the St. Louis County Courthouse and Maurices headquarters, and within walking distance to Canal Park and the Duluth Entertainment Convention Center.**



**Greg Follmer Broker MN/WI 218.310.0013 [GregFollmer@gmail.com](mailto:GregFollmer@gmail.com)**

10 E Superior St #6 Duluth, Minnesota 55802 Licenses in Minnesota and Wisconsin

All Information Herin Deemed Reliable but not Guarnateed

## Available Opportunities

Suite 20 – 2,526 SF – former restaurant

Suite 22 – 563 SF – former salon

Suite 200 – 903 SF – office

Suite 202 – 1,152 SF – office

Suite 203 – 1,150 SF – potential availability

8<sup>th</sup> Floor – 6,223 SF – Former Grain Trading Floor

9<sup>th</sup> Floor – 2,076 SF – Former Trading Floor

## Parking

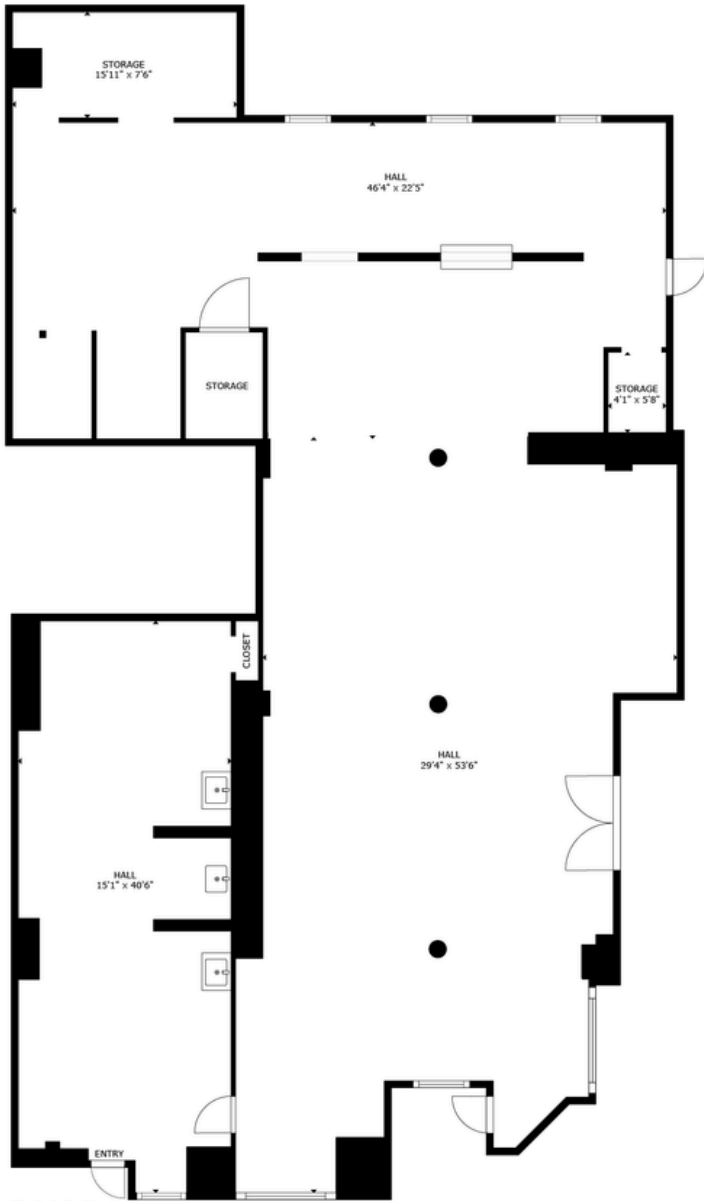
Nearby ramp parking \$80-\$100/month

Street Metered Parking

Building owned surface lot M-T-M spaces available

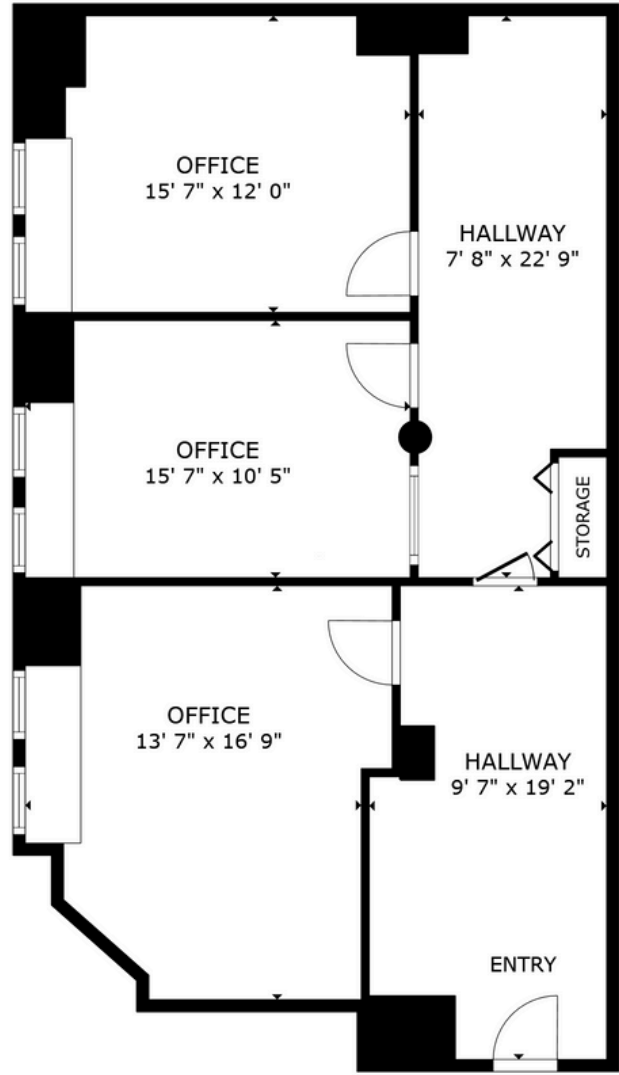
**301 W Superior Street  
Duluth, MN 55802  
Historic Board of Trade Building**





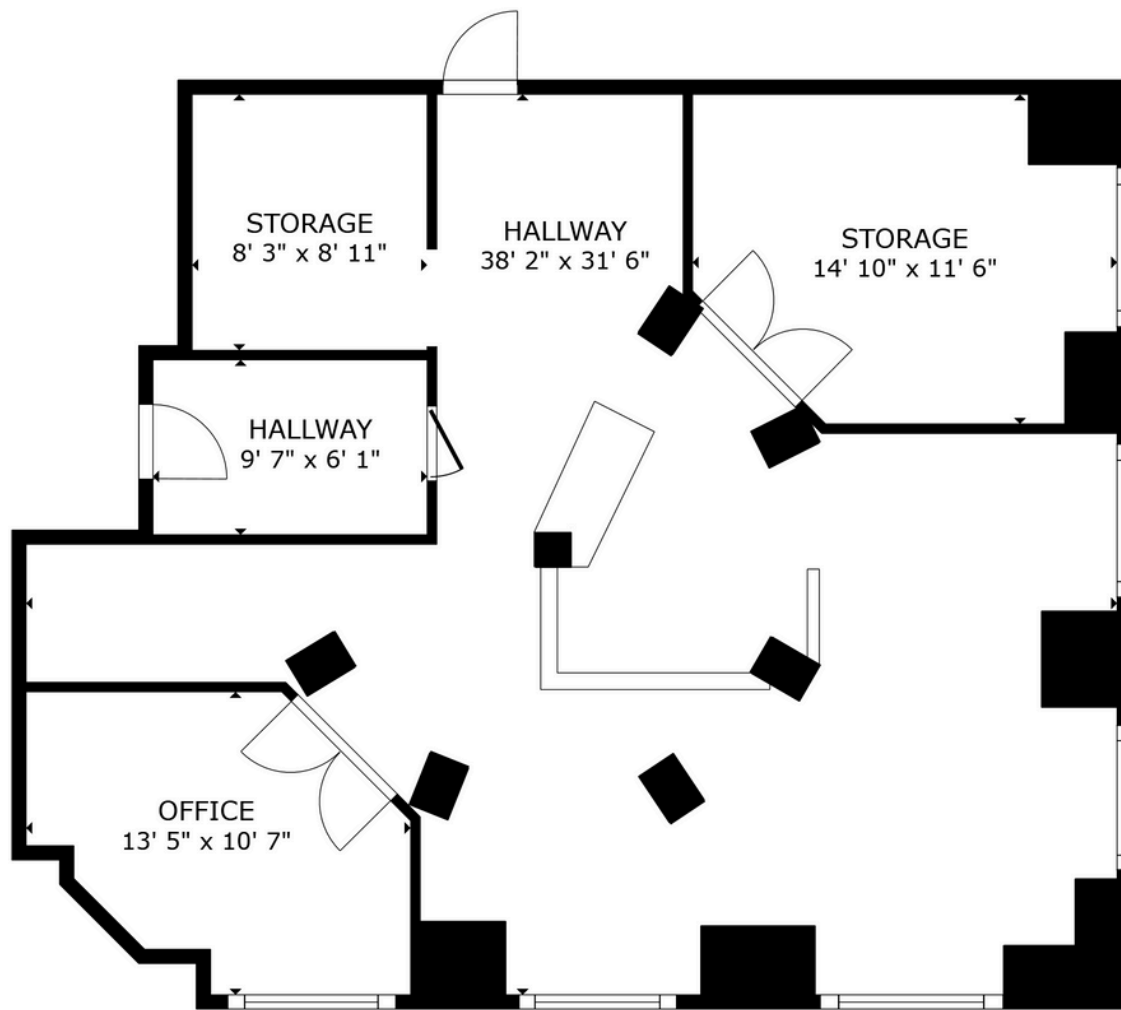
FLOOR PLAN

GROSS INTERNAL AREA  
 FLOOR PLAN: 3,128 sq. ft  
 SIZES AND DIMENSIONS ARE APPROXIMATE, ACTUAL MAY VARY.



FLOOR PLAN

GROSS INTERNAL AREA  
 FLOOR PLAN 945 sq.ft.  
 TOTAL : 945 sq.ft.  
 SIZES AND DIMENSIONS ARE APPROXIMATE, ACTUAL MAY VARY.

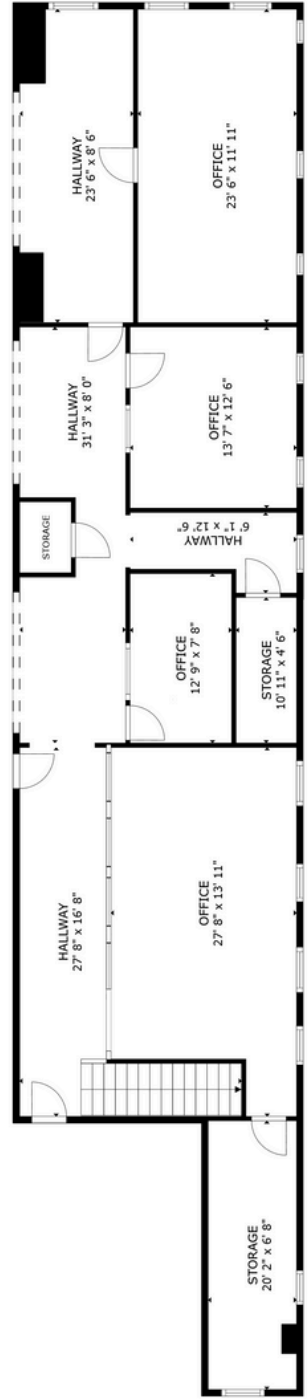
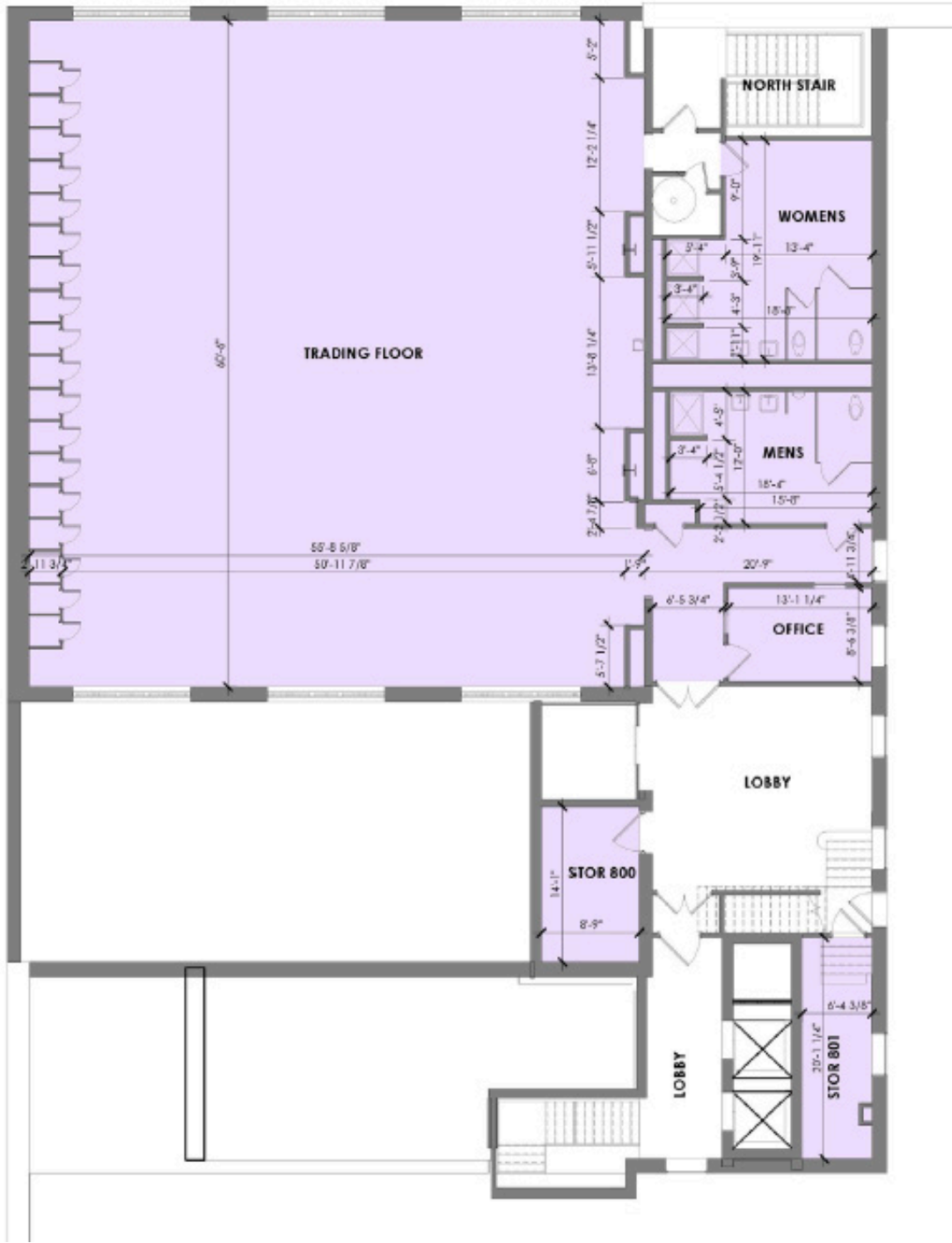


FLOOR PLAN

GROSS INTERNAL AREA  
FLOOR PLAN 1,100 sq.ft.  
TOTAL : 1,100 sq.ft.

SIZES AND DIMENSIONS ARE APPROXIMATE, ACTUAL MAY VARY.





FLOOR PLAN