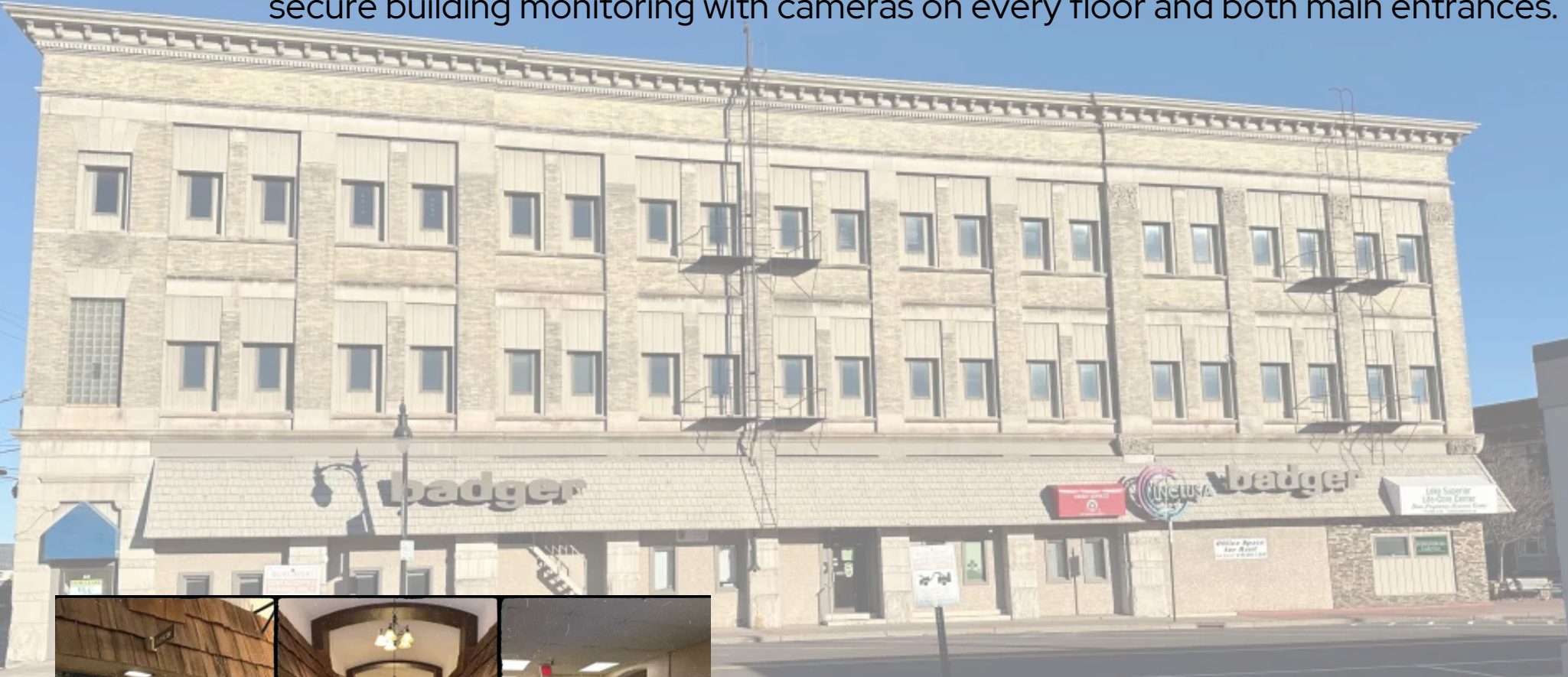
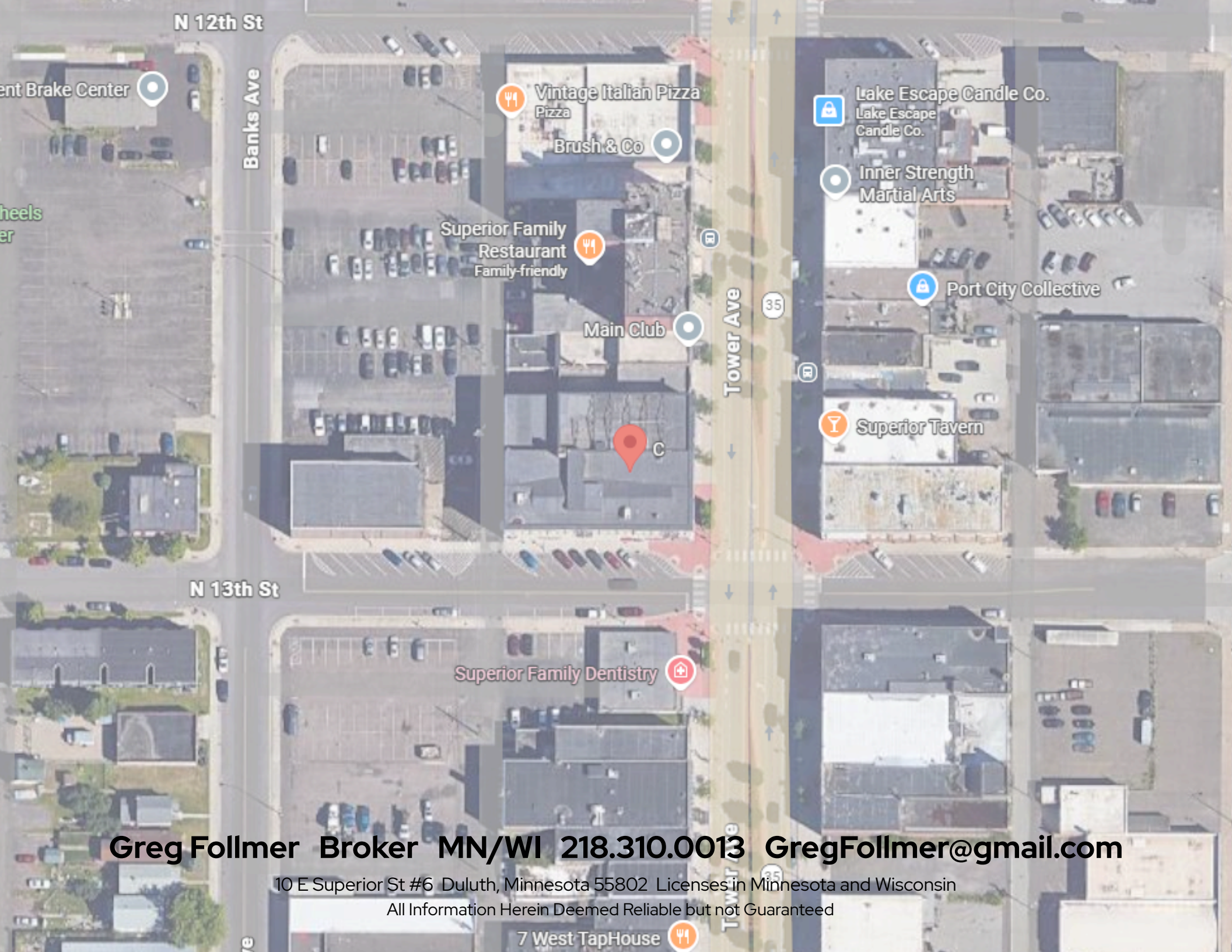




Badger Building
1225 Tower Ave, Superior, WI 54880
Newly Remodeled Office Suites for Lease

Located in the heart of downtown Superior, the Badger Building combines historic character with modern updates. The property features a variety of newly remodeled office suites ranging from small private offices to larger multi-room layouts. Tenants enjoy elevator access to all floors, keyless fob entry for after-hours and weekend use, on-site management and maintenance, and secure building monitoring with cameras on every floor and both main entrances.





N 12th St

Banks Ave

Tower Ave

N 13th St

Tower Ave

Vintage Italian Pizza
Pizza

Brush & Co

Superior Family
Restaurant
Family-friendly

Main Club

Lake Escape Candle Co.
Lake Escape
Candle Co.

Inner Strength
Martial Arts

Port City Collective

Superior Tavern

Superior Family Dentistry

Greg Follmer Broker MN/WI 218.310.0013 GregFollmer@gmail.com

10 E Superior St #6 Duluth, Minnesota 55802 Licenses in Minnesota and Wisconsin

All Information Herein Deemed Reliable but Not Guaranteed

7 West TapHouse

Available

OFFICE SUITES

Suite 101 - 2,000 SF - \$2,350/gross

All Mezz B - 850 SF - \$900/gross

Suite 200 - 2,400 SF - \$1,600/gross

Suite 207 - 270 SF - \$450/gross

Suite 218 - 590 SF - \$675/gross

Suite 228 - 3,300 SF - \$3,850/gross

Suite 316 - 80 SF - \$220/gross



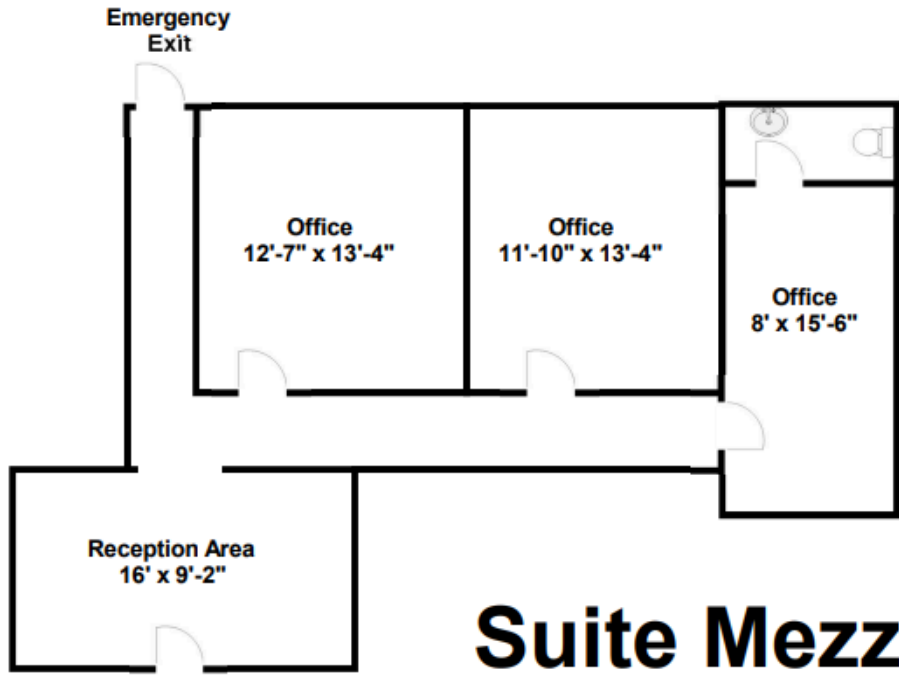
1225 Tower Ave, Superior, WI 54880
Badger Building



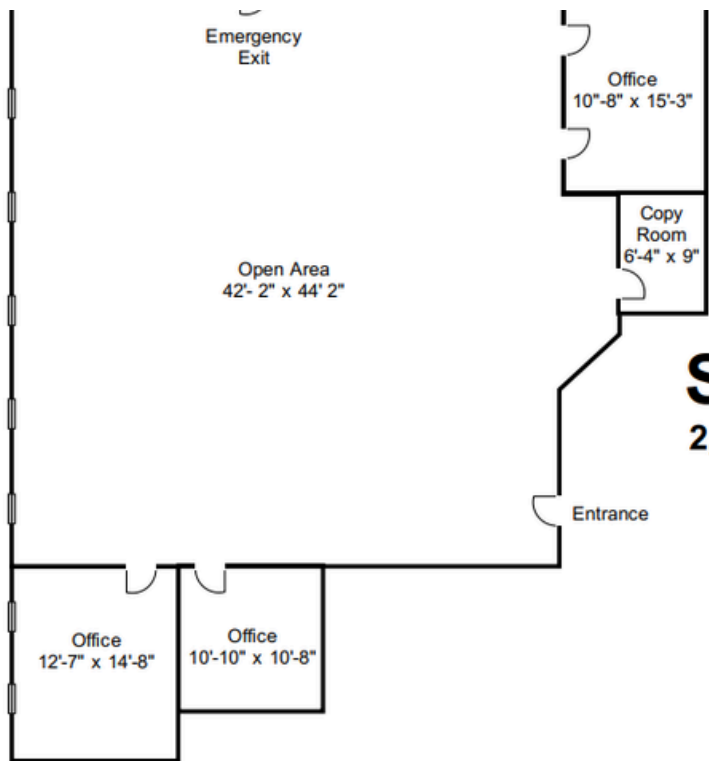
10 E Superior St #6 Duluth, Minnesota 55802 Licenses in Minnesota and Wisconsin
All Information Herein Deemed Reliable but not Guaranteed



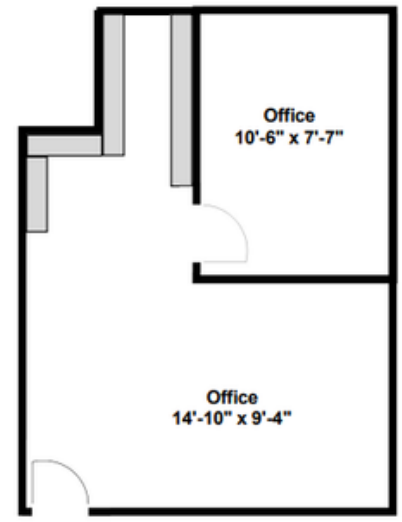
Suite 101
2000 Square Feet



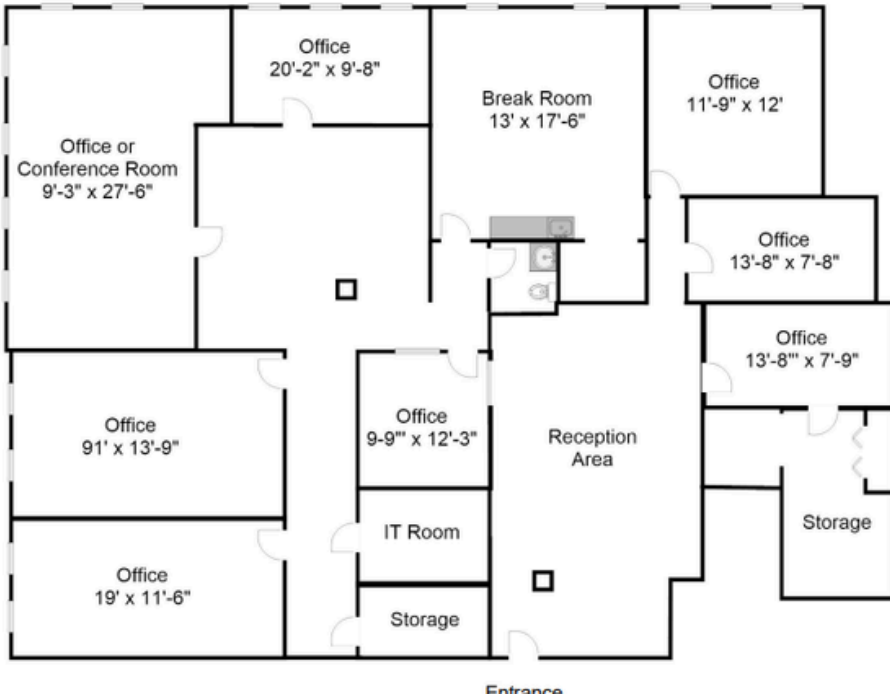
Suite Mezz B
850 Square Feet



Suite 200
2,400 Square Feet

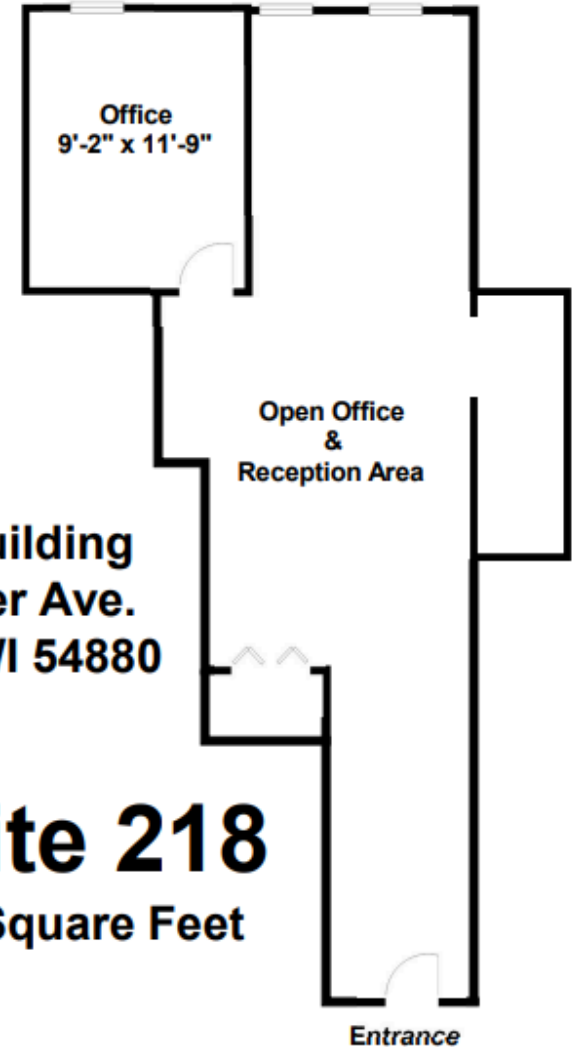


Suite 207
270 Square Feet



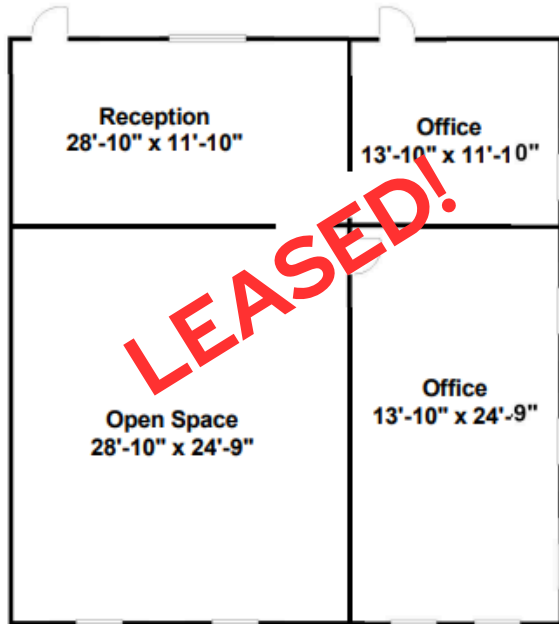
Badger Building
1225 Tower Ave.
Superior, WI 54880

Suite 228
3300 Square Feet



Badger Building
1225 Tower Ave.
Superior, WI 54880

Suite 218
590 Square Feet



Suite 307
1300 Square Feet

Badger Building
1225 Tower Ave.
Superior, WI 54880

Greg Follmer Broker MN/WI 218.310.0013 GregFollmer@gmail.com

10 E Superior St #6 Duluth, Minnesota 55802 Licenses in Minnesota and Wisconsin
 All Information Herein Deemed Reliable but not Guaranteed