

# 3219 19<sup>th</sup> Ave E, Hibbing, MN

## Offered at \$995,000

**Prime Office/Warehouse!**

**Lots of parking and yard storage space with fully insulated and finished warehouse/Shop. Overhead doors, fully heated and great office space at front. Managers studio apartment above office space.**



**Greg Follmer Broker MN/WI 218.310.0013 [GregFollmer@gmail.com](mailto:GregFollmer@gmail.com)**

10 E Superior St #6 Duluth, Minnesota 55802 Licenses in Minnesota and Wisconsin

All Information Herein Deemed Reliable but not Guaranteed



**3219 19<sup>th</sup> Ave E, Hibbing, MN**  
**Offered at \$995,000**



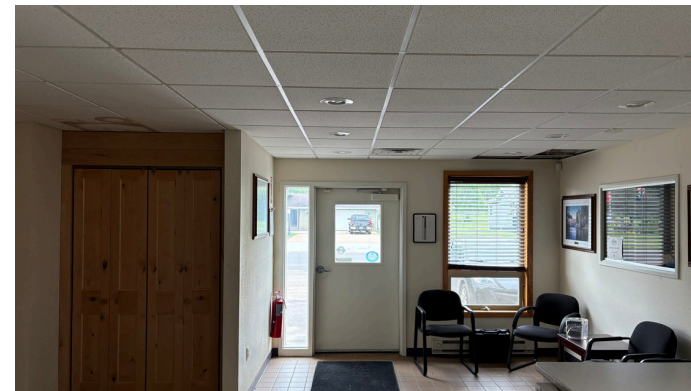
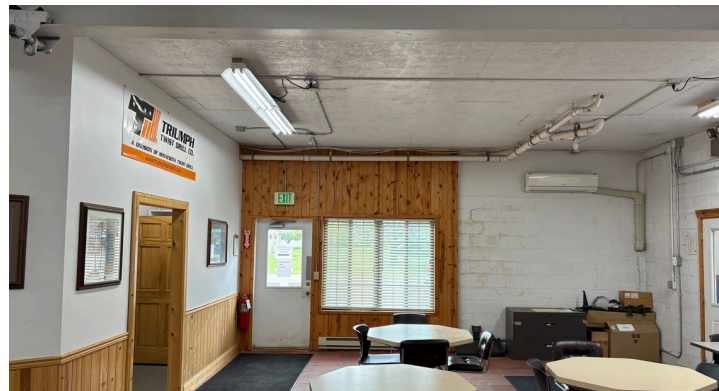
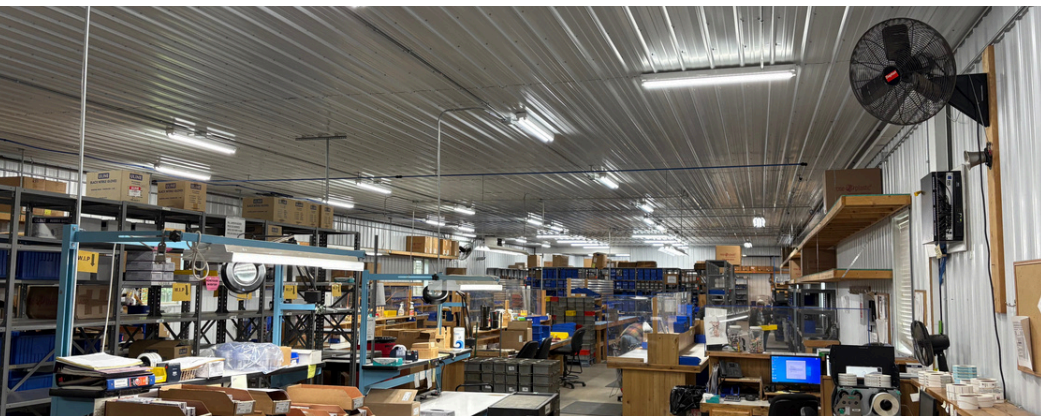
**Greg Follmer Broker MN/WI 218.310.0013 [GregFollmer@gmail.com](mailto:GregFollmer@gmail.com)**

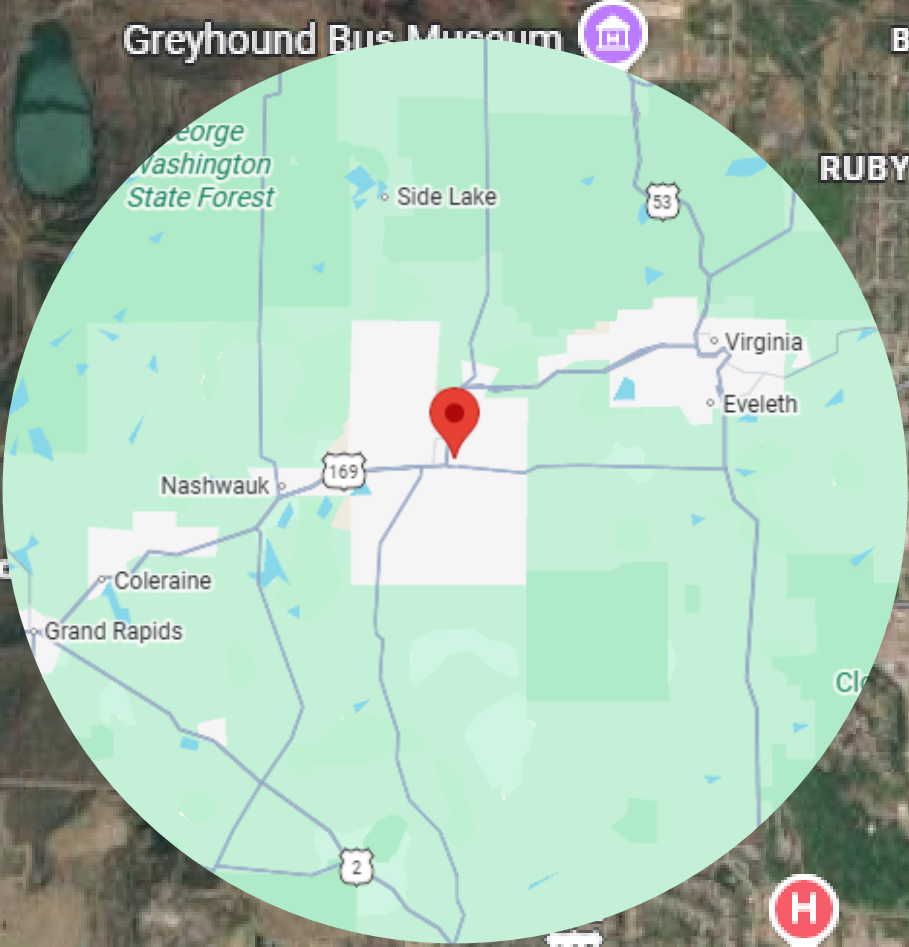
10 E Superior St #6 Duluth, Minnesota 55802 Licenses in Minnesota and Wisconsin

All Information Herein Deemed Reliable but not Guaranteed

# 3219 19<sup>th</sup> Ave E, Hibbing, MN

Offered at \$995,000





# 3219 19<sup>th</sup> Ave E Hibbing, MN Offered at \$995,000

- #140-0095-00090
- 2026 Taxes \$5,894.00
- Built in 1940
- 15,052 Building
- 176x200 Lot



**Greg Follmer Broker MN/WI 218.310.0013 GregFollmer@gmail.com**

10 E Superior St #6 Duluth, Minnesota 55802 Licenses in Minnesota and Wisconsin

All Information Herein Deemed Reliable but not Guaranteed